

PHILIPS

Smart Meeting

PSE0400

360° 立体拾音

多功能视讯会议系统



使用手册

User manual

## 欢迎

欢迎来到飞利浦世界！您能选择和购买飞利浦的产品，我们非常高兴。您可以在我们的官方网站上获得飞利浦公司的全方位技术支持，如：使用手册、软件下载、保修信息等。

www.philips.com

## 产品特点

本产品采用先进的音频处理技术，有效抑制环境噪音和回声的影响，具有远距离精准拾音的特性，适用于高清通话系统，产品特点如下：

- 采用4颗数字麦克风组合，360° 全向拾音。
- 采用专业音频算法，有效抑制环境噪音及回声影响。
- 采用高灵敏度麦克风，捕捉细微的声音，采样率达48KHz/24bit。
- 免驱设计，USB即插即用。
- 采用专业的声学设计，有效的提高声音的拾取。
- 采用时尚的设计元素，更加适合现代化应用场景。

## 安全信息

在使用和操作设备前，为确保设备性能最佳，并避免出现危险或非法情况，请遵循各项电气安全规定和适用的法律。

## 注意

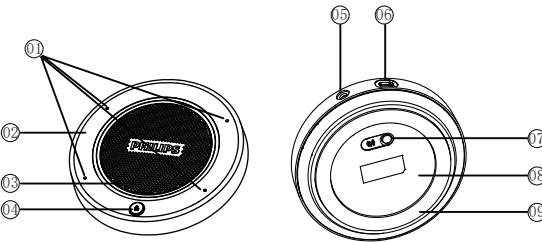
- 如果电脑中外接设备比较多，需要在系统声音设置中，把输入设备设置成PSE0400。
- 建议使用Windows 7及以上版本系统，较低版本系统可能需要安装USB万能驱动，同时兼容性可能会比较差，从而影响PSE0400的使用效果。
- PSE0600只能支持外扩一个PSE0400，并且PSE0400不会起到生源定位的功能，只有会议拾音功能；PSE0500可以最多支持4个PSE0400，组成更大的麦克风阵列组。
- 无线连接方式，PSE0400只能与PSE0500连接，组成麦克风阵列组。
- 麦克风阵列正常工作状态下，短按静音键，实现静音功能，此时红色指示灯亮，将不会把音频输出给其它设备；在静音状态下，短按静音键，麦克风阵列拾音恢复正常，此时蓝色指示灯亮，恢复将音频输出给其它设备。

## 您的设备

### 设备包含



### 主机预览



- ① 麦克风
- ② 面壳
- ③ 指示灯
- ④ 静音键

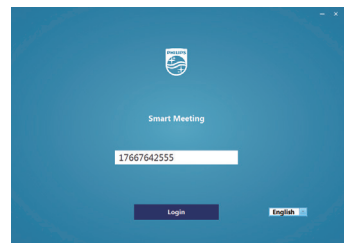
- ⑤ 音频输出接口
- ⑥ USB接口
- ⑦ U段配对键
- ⑧ 底壳
- ⑨ 防滑垫

## 设置说明

### PC端软件

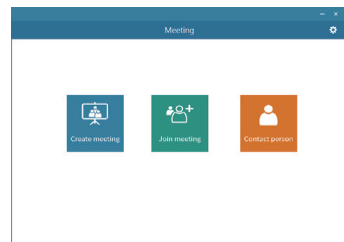
获取飞利浦PC端视讯软件请登录并下载路径：

[download.szgps.net/SmartMeeting/SmartMeeting.exe](http://download.szgps.net/SmartMeeting/SmartMeeting.exe)



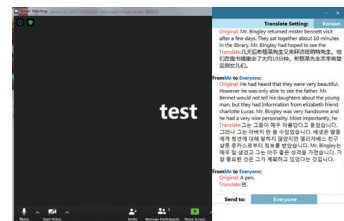
### 登录界面

输入正确的产品序列号，点击登录即可使用此软件。



### 主界面

创建会议，加入会议，联系人。

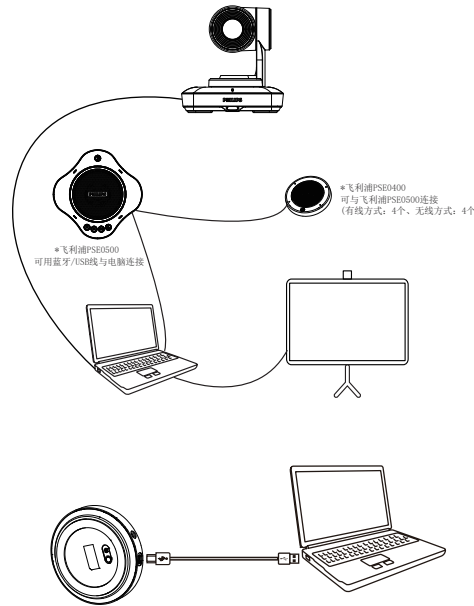


### 实时翻译

支持多国语言实时字幕+翻译。

### 扩展使用

- PSE0400单独使用时可以和电脑通过有线方式配合使用。
- PSE0400可与PSE0500/PSE0500通过有线或无线两种方式配合使用。



## 温馨提示

- 了解更多使用操作，请访问：  
<http://www.jwd-dvr.com/philips/guanyuwomen/jishuyushouhou/>

Service  
Service  
Service  
GUARANTEE

This guarantee card is valid in china  
This guarantee card should be retained by  
The USER  
此保用卡在中國適用，用戶請保留此卡。



此产品是一件设计精良，有高品质原件制造之数码产品，在正确使用及保养下应能正确地表现其优越性能。  
自购买日期始，整机保修一年。关于主要部件保修期限，按照国家消费法规定执行。多功能视讯设备中国区总经销（深圳市京华数码科技有限公司）将按下列保用条款持卡用户提供免费维修服务。

### 保用条例：

保用服务只限于一般正常使用下有效。一切人为损坏，例如接入不当电源，使用不当配件，不依说明书使用，因运输及其他意外而造成之损坏，非经本公司认可之维修和改装，用于商业及工业目的造成产品损坏，错误使用或疏忽而造成损坏，不当之安装或因天灾造成损坏等，保用服务立刻失效。此保用服务并不包括附件，辅助装置，运输费。维修时请带上此卡及正本发票。

User's Name:	Model No:
用户姓名.....	型号.....
Address:	Serial No:
地址.....	机身编号.....
Tel.No:	Product Place:
电话.....	产地.....
Post Code:	
邮编.....	
Company Seal:	Shop name and address:
购买商品印章.....	购买商名称及地址.....
Date of Purchase:	Invoice No:
购买日期.....	发票号.....
	Tel.No/Post Code:
	电话/邮编.....

产品服务热线：400 800 7890

Specifications subject to change without notice.

Trade marks are the property of Royal Philips or their respective owners.

© 2020 Speech Processing Solutions GmbH.All rights reserved. Philips and the Philips' shield

emblem are registered trademarks of Koninklijke Philips N.V.and are used by Speech

Processing Solutions GmbH under license from Koninklijke Philips N.V.All trademarks are the

property of their respective owners.

Document version 1.0,2020-10-20



PHILIPS

Smart Meeting

PSE0400

360° Sound Pickup

Smart Meeting software



使用手册

User manual

## Welcome

Welcome to the world of Philips! We are delighted that you choose and buy Philips products. You can have access to full set of technical support on Philips official website, such as user manuals, software downloads, and guarantee information, etc.

[www.philips.com](http://www.philips.com)

## Product Features

This product adopts an advanced audio processing technology to effectively suppress the impact of environmental noise and echo, with the characteristics of long-distance accurate pickup. It applies to the high-definition communication system. The product features are as follows:

- Realize 360° omnidirectional pickup via a combination of 4 digital microphones.
- Effectively suppress the impact of environmental noise and echo via the professional audio algorithms.
- Capture subtle sounds via a highly sensitive microphone with a sampling rate up to 48KHz/24bit.
- Adopt the drive-free design with plug-and-play USB interface.
- Effectively improve sound pickup via the professional acoustic design.
- Apply to modern application scenarios via fashionable design elements.

## Safety Information

Please abide by all regulations and applicable law on electric safety when using and operating this equipment in order to ensure the best performance of the equipment and avoid dangers or illegal situations.

### Notice

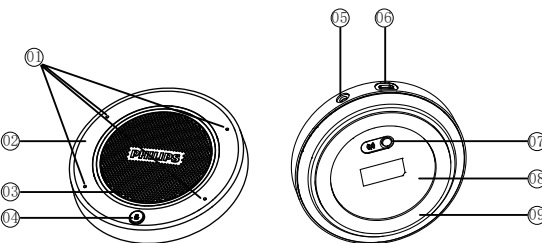
- If many external devices are connected to the computer, set the input device to PSE0400 in the sound setting panel in the system.
- It is recommended to use Windows 7 operating system or later versions. Prior versions may require a universal USB driver, and the compatibility may be worse, which will affect the performance of PSE0400.
- PSE0600 can support only one PSE0400 as an external device, and PSE0400 is equipped with the function of conference sound pickup only without source positioning; PSE0500 can support four PSE0400 at most to form a larger microphone array.
- Wireless connection mode: PSE0400 can only be connected with PSE0500 to form a microphone array.
- During the normal operating process of the microphone array, short press on the mute button activates the mute function; then the red indicator lamp is on, with no audio frequency output to other devices. In the mute mode, short press on the mute button will restore the audio pickup of the microphone array; then the blue indicator lamp is on, resuming the audio output to other devices.

## Your Device

### What's in the box



## Overview



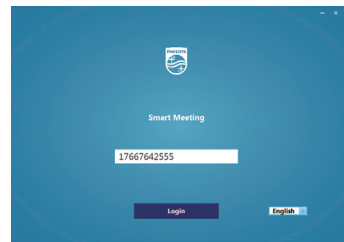
- ① Microphone
- ② Cover
- ③ Indicator lamp
- ④ Mute button
- ⑤ Audio frequency output interface
- ⑥ USB interface
- ⑦ U-band pairing button
- ⑧ Back cover
- ⑨ Non-slip mat

## Settings

### PC Software

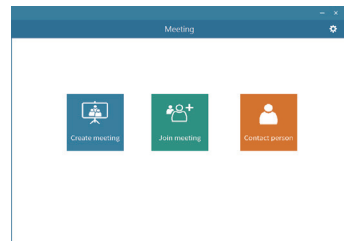
- To get the Philips PC video software, please log in and download at:

[download.szgps.net/SmartMeeting/SmartMeeting.exe](http://download.szgps.net/SmartMeeting/SmartMeeting.exe)



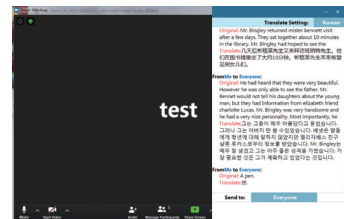
#### Login Interface

Type in the correct product serial number and click "Login" to use this software.



#### Main Interface

Create meeting, join meeting and contact person.

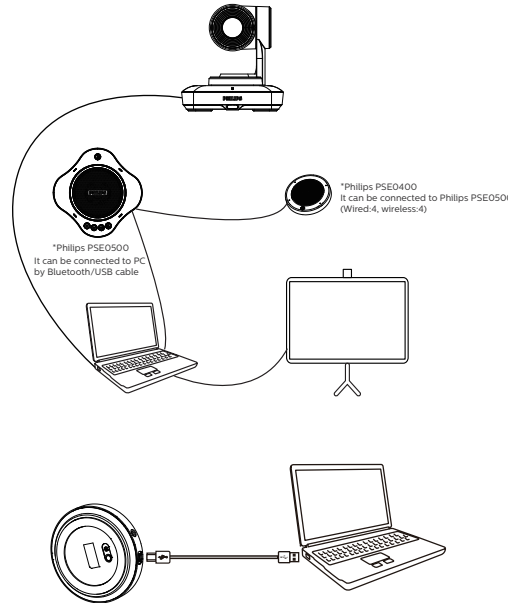


#### Real-time Translation

Support real-time subtitles + translation in several languages.

### Expanded Use

- When used alone, PSE0400 can be connected to a computer by cables.
- PSE0400 can be used in conjunction with PSE0500/PSE0500 in two ways - wired or wireless.



## Reminder

- To know more about operations, please visit:

<http://www.jwd-dvr.com/philips/guanyuwomen/jishuyushouhou/>

## Service Service Service GUARANTEE

This guarantee card is valid in china. This guarantee card should be retained by The USER. 此保用卡在中國適用，用戶請保留此卡。



This product is made of high quality material and great care has been taken in its manufacture. It is designed to give good performance provided it is properly operated and maintained. The product is sold subject to the understanding that if any defect in manufacture or material shall appear within 12 months, the warranty period is subject to country Consumer Law, Jingwah Digital Service will arrange for such defect to be rectified without charge under the following warranty items and conditions.

## Warranty Terms and Conditions:

The defect is not due to use of the product for other than domestic purposes, or an incorrect voltage, or use of improper accessories, or contrary to operating instructions, or to accidental damage (whether in transit or otherwise), misuse, neglect or inexact repair, or incorrect installation, or the product is excessively used for improper purposes other than daily consumption, or accessories belonging to the product, transportation.

Present this warranty card and sales invoice when demanding service from Philips authorized service centres.

User's Name:	Model No:
用户姓名:	型号:
Address:	Serial No:
地址:	机身编号:
Tel.No:	Product Place:
电话:	产地:
Post Code:	
邮编:	
Company Seal:	Shop name and address:
购买商品印章:	购买商名称及地址:
Date of Purchase:	Invoice No:
购买日期:	发票号:

Product Service Hotline: 400 800 7890

Specifications subject to change without notice.

Trade marks are the property of Royal Philips or their respective owners.

© 2020 Speech Processing Solutions GmbH. All rights reserved. Philips and the Philips' shield

emblem are registered trademarks of Koninklijke Philips N.V. and are used by Speech

Processing Solutions GmbH under license from Koninklijke Philips N.V. All trademarks are the

property of their respective owners.

Document version 1.0, 2020-10-20

